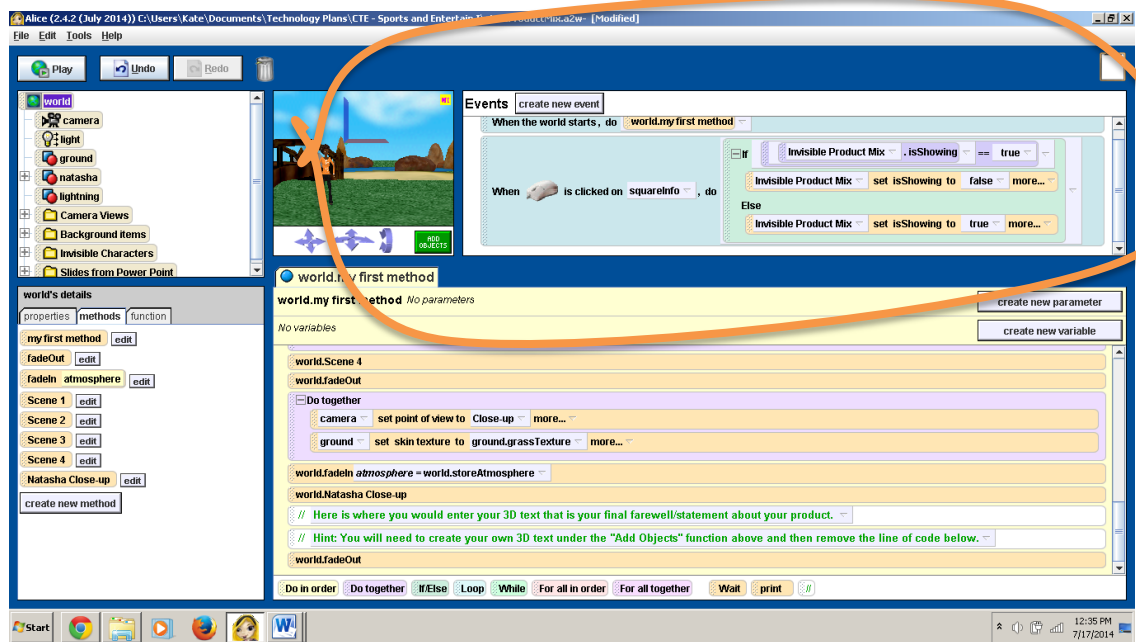


ALICE Product Mix Tutorial

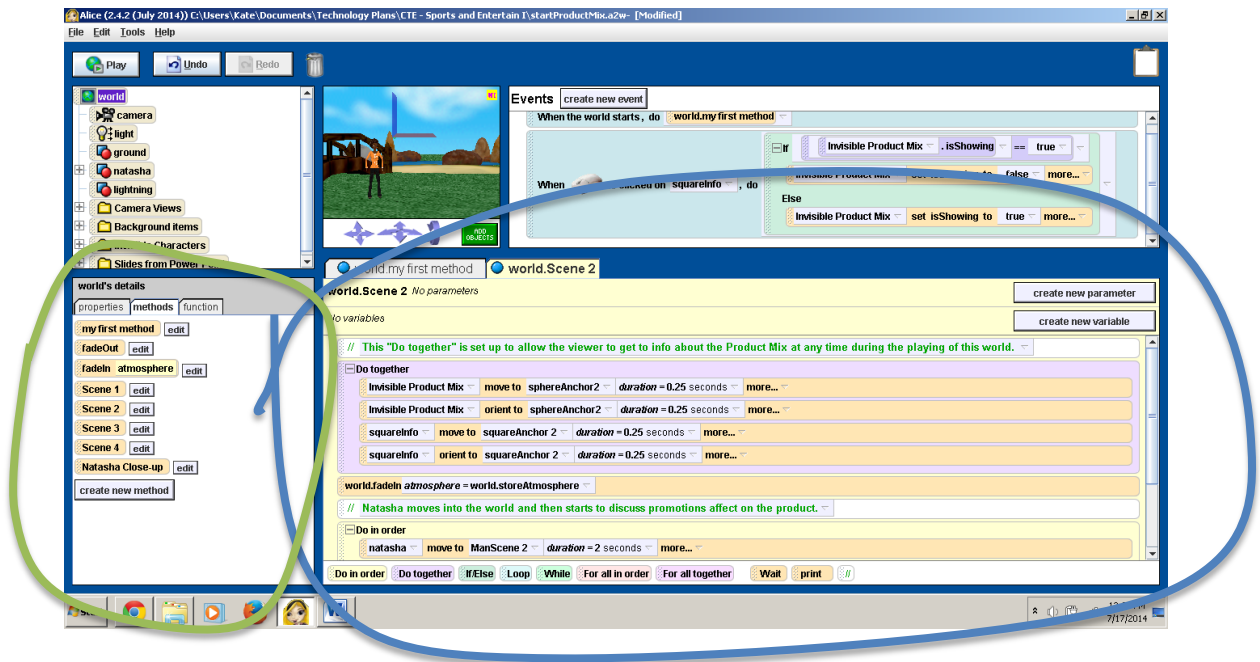
To start with this project you will need to:

1. Pick a product related to the sports or entertainment industry. It can be anything from concert tickets to tennis shoes.
2. Fill out the “Alice teaches Product Mix” worksheet. Your responses to the questions will be the material/information you will use to enhance your Alice World.
3. Open up your Power Point program and then create individual slides – one slide for each question. Note: There are two questions for scene 2.
4. When slides are completed save each individual slide as a JPEG file.
5. Open up your Alice Starter World on Product Mix.
 - a. The file is linked to my website at Product Mix [Starter World](#). Click and download onto your system renaming it with your last name at the end of the file name.
 - b. Below is a screen shot of what your Alice Starter World will look like when you open the file downloaded from my website. You will notice a blue box entitled “Events” in the upper right. This box should not be altered.

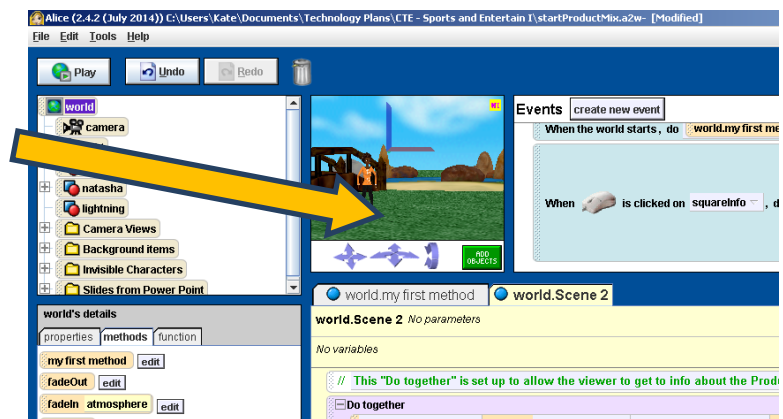


6. Design/complete an Alice program that explains your found information and conclusions. The requirements for your program are as follows:
 - a. Use a character to deliver your information and/or introduction to a slide; do not simply use words/text on the screen. This is not a power point presentation, but there will be slides used as billboards within the program.
 - b. Create changes within each scene that include
 - Alterations to the character’s comments and the addition of a billboard (PowerPoint slide) within a scene that contains responses to questions from the worksheet.
 - c. Incorporate 3D text at the end of the program that closes out the presentation.
7. There are comments typed in green to help you focus on the sections/line of code with which you work.
 - a. You will also need to go to the lower left segment and edit the various scenes. The number of the scene correlates with the question number from your worksheet. (green) Simply hit the “edit” button to the right and it will open in the blue section where you can work on the code.

b. You will make your changes in the lower right segment of your screen. (blue)



8. In the center top of your screen you will find a picture of your world with a green button that is entitled “Add Objects”. Click on this to add and edit things in your world such as the Power Point slides you will be adding as billboards to your world.



9. To add your Power Point slides to the world you will need to execute the following:

- a. Click on “File”
- b. Click on “Make Billboard”
- c. Search for your slide JPEG file
- d. Import the image
- e. Use the green button from #8 above to move/place the slide you have added.
- f. This can be difficult because it will place the billboard in the first scene and it is a 2D item. A tip to help line it up in the world:
 - i. Right click **camera** button
 - ii. Click **methods**
 - iii. Click **set point of view**
 - iv. Click **camera views**
 - v. Select **scene 1**
 - vi. Use the object buttons to move the slide



10. When completed have Ms. Keller come over and add it to her flash dive for presentation. You must turn in your worksheet at the same time. You do not need to submit your Power Point file/slides.